

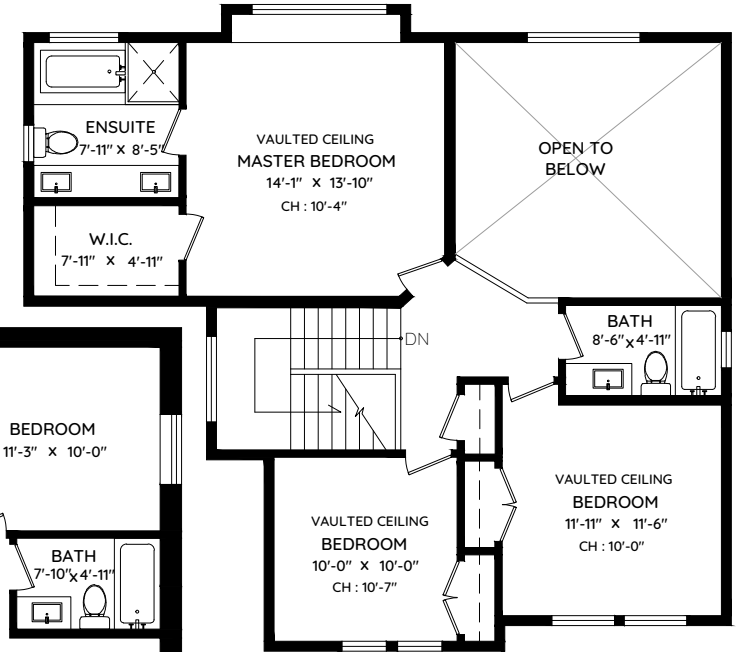
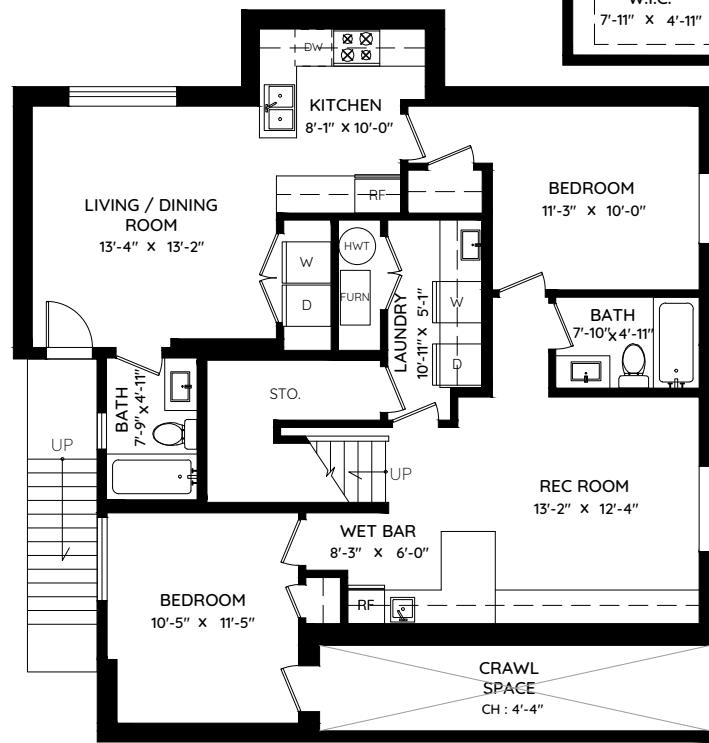
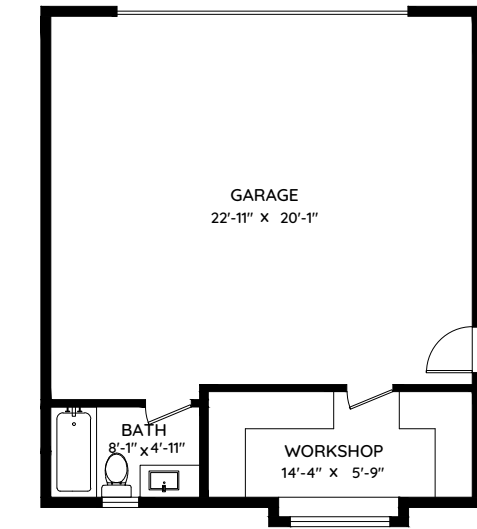
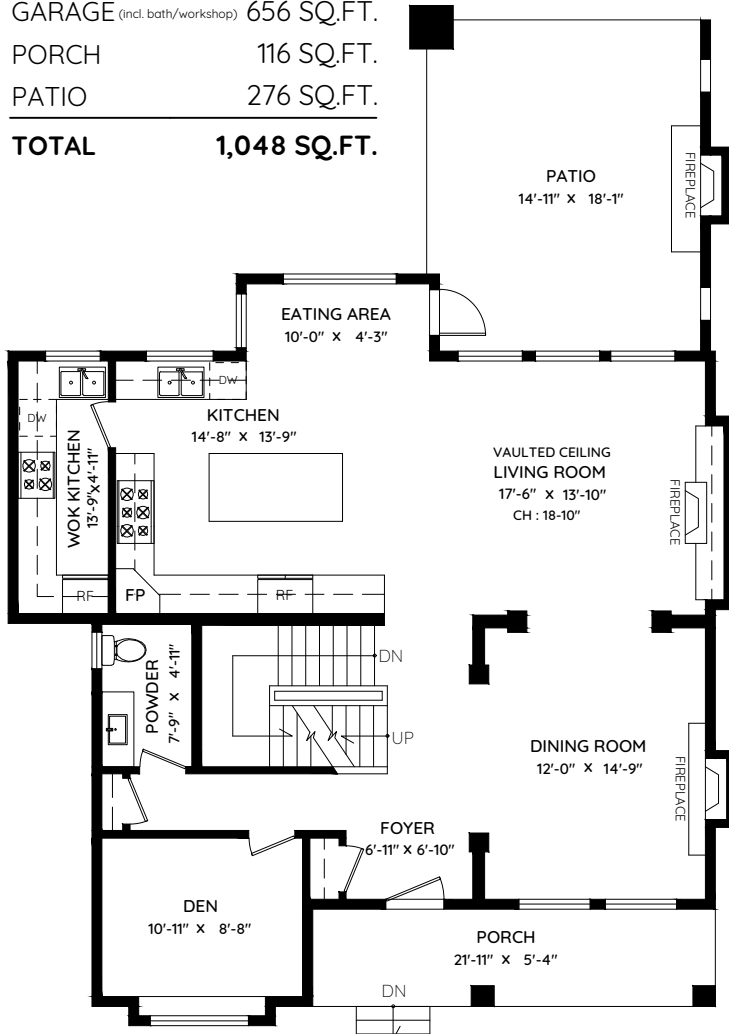
221 3RD AVENUE NEW WESTMINSTER, BC

MAIN 1,230 SQ.FT.
 UPPER 864 SQ.FT.
 LOWER 1,231 SQ.FT.
TOTAL 3,325 SQ.FT.

GARAGE (incl. bath/workshop) 656 SQ.FT.
 PORCH 116 SQ.FT.
 PATIO 276 SQ.FT.
TOTAL 1,048 SQ.FT.



ROBERT ALMEIDA
 www.HOMESForBC.ca



0 ft 3 ft 5 ft 10 ft

The floor plan and the measurements are approximate within +/- 2% and are to be used for advertising usage only. May include unfinished area. Not suitable for architectural or construction. E&O Insured



RE/MAX
 CREST REALTY

keyplan
 plan your space